

ODM Quality Report

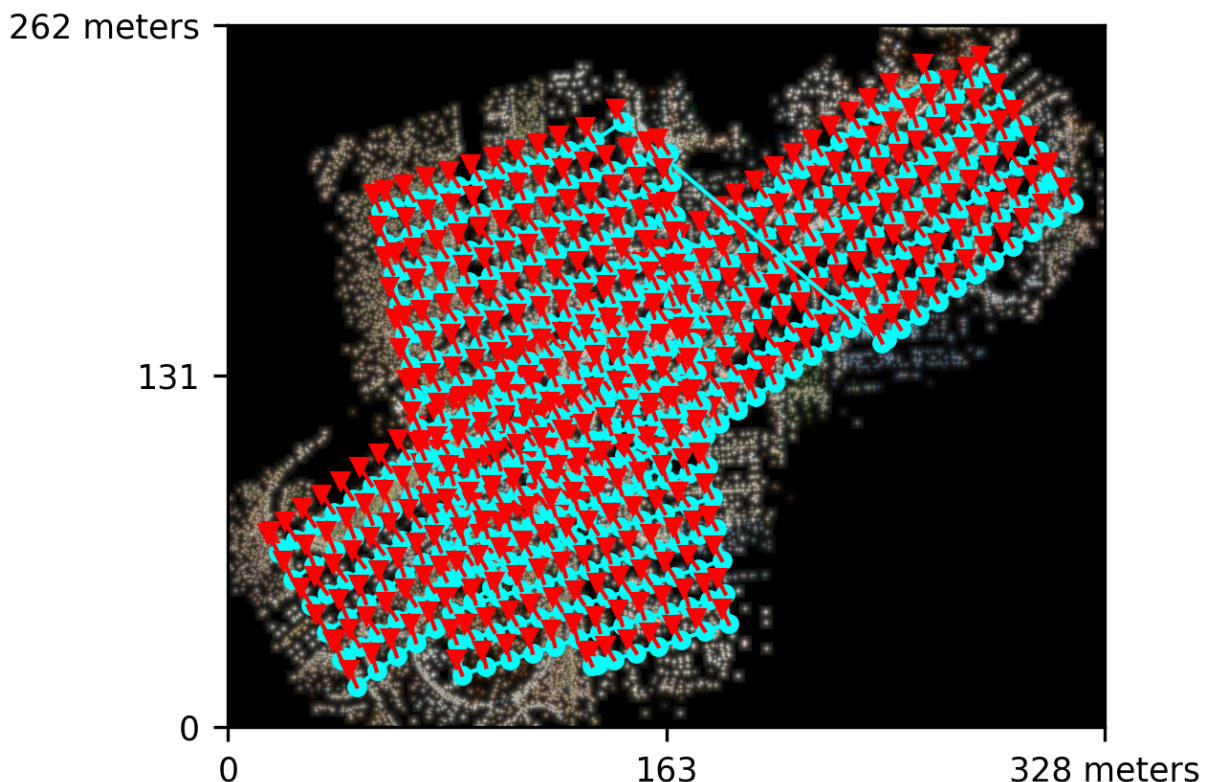
Processed with ODM version 3.3.4

Dataset Summary

Date	19/11/2024 at 15:27:11
Area Covered	0.068084 km ²
Processing Time	2.0h:16.0m:35.0s
Capture Start	19/11/2024 at 12:53:39
Capture End	19/11/2024 at 13:20:13

Processing Summary

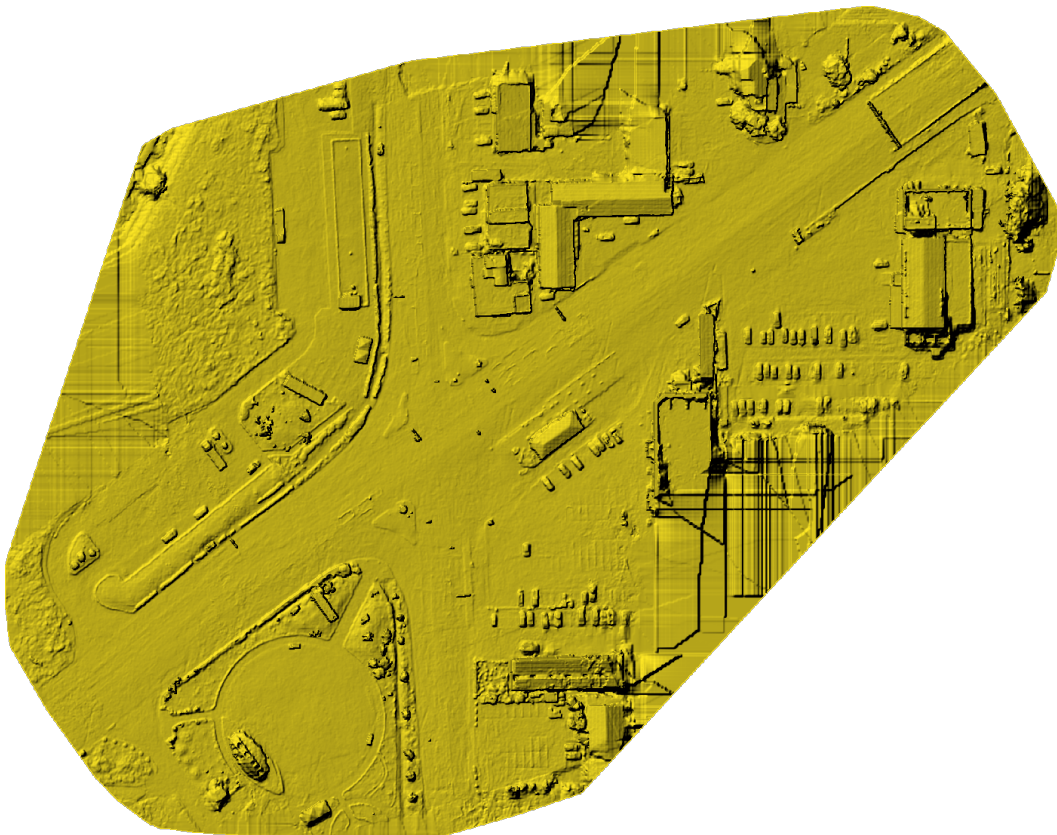
Reconstructed Images	467 over 467 shots (100.0%)
Reconstructed Points (Sparse)	427044 over 437683 points (97.6%)
Reconstructed Points (Dense)	66,859,589 points
Average Ground Sampling Distance (GSD)	1.4 cm
Detected Features	15,000 features
Reconstructed Features	3,222 features
Geographic Reference	GPS and GCP
GPS / GCP errors	155.67 / 0.09 meters



Previews



Orthophoto

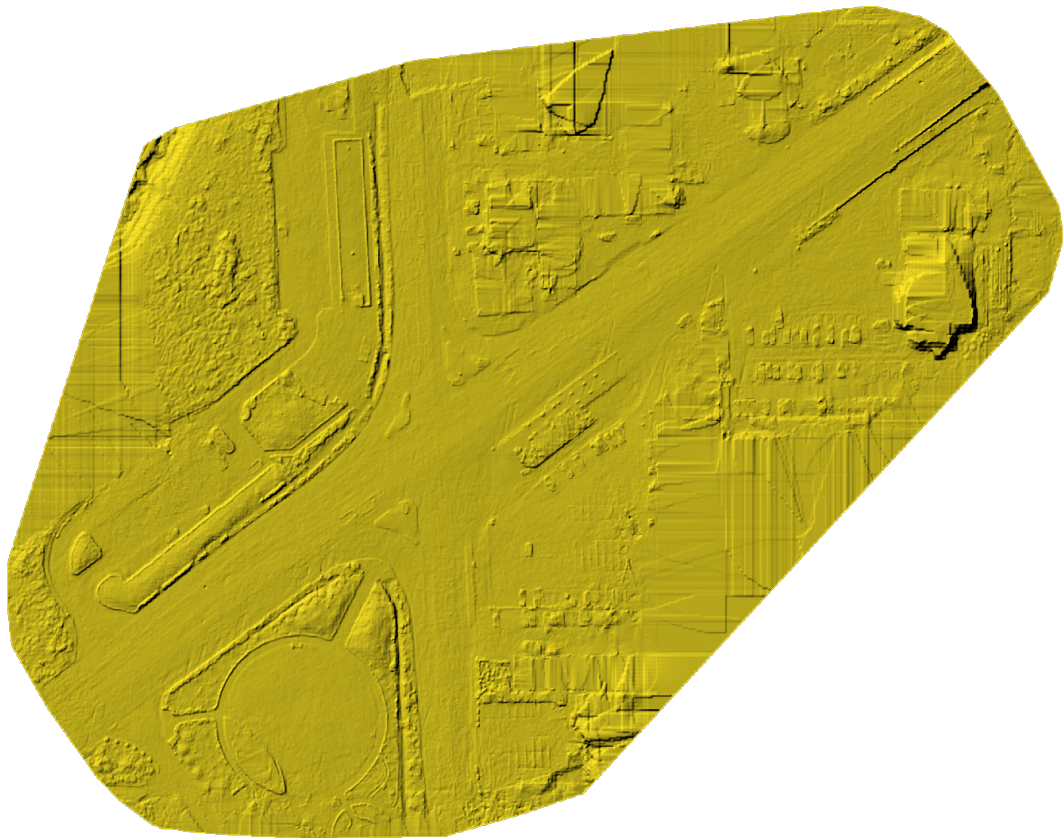


Digital Surface Model



-159.43m

-129.36m



Digital Terrain Model



Survey Data



■ 2 ■ 3 ■ 4 ■ 5+

GPS/GCP/3D Errors Details

GPS	Mean	Standard Deviation	RMS Error
X Error (meters)	3.240	0.868	3.355
Y Error (meters)	-6.424	0.612	6.453
Z Error (meters)	155.500	2.546	155.521
Total			155.670

GCP	Mean	Standard Deviation	RMS Error
X Error (meters)	0.006	0.020	0.021
Y Error (meters)	-0.033	0.077	0.083
Z Error (meters)	0.072	0.130	0.148
Total			0.091

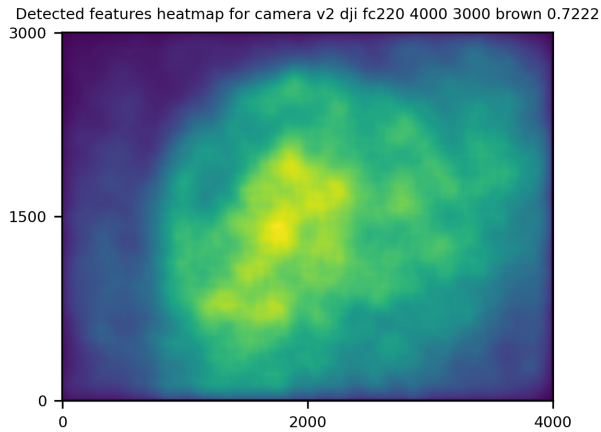
3D	Mean	Standard Deviation	RMS Error
X Error (meters)	0.020	0.059	0.062
Y Error (meters)	0.021	0.058	0.062
Z Error (meters)	0.066	0.189	0.200
Total			0.077

	Absolute	Relative
Horizontal Accuracy CE90 (meters)	0.112	0.058
Vertical Accuracy LE90 (meters)	0.208	0.134

Ground Control Point Error

ID	Error X (m)	Error Y (m)	Error Z (m)
16	-0.005	0.008	0.012
17	-0.000	0.013	-0.001
18	0.001	-0.000	0.000
19	0.000	0.004	-0.006
6	-0.008	-0.005	-0.006
5	0.007	-0.107	0.170
12	0.064	-0.236	0.417
15	0.027	-0.113	0.246
14	-0.018	-0.007	0.000
13	0.005	-0.001	0.009
1	0.002	-0.001	0.002
20	-0.001	0.053	0.019

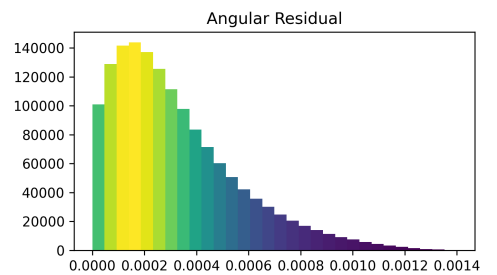
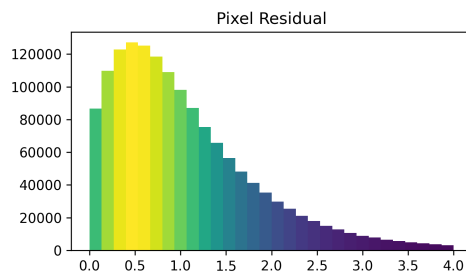
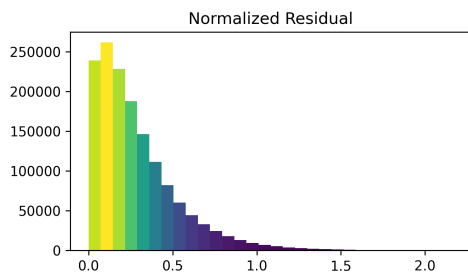
Features Details



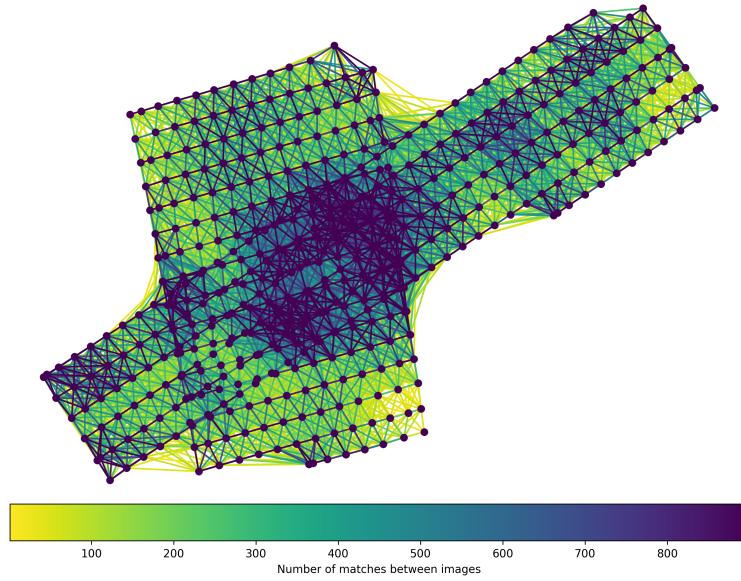
	Min.	Max.	Mean	Median
Detected	10078	15002	14733	15000
Reconstructed	97	5900	3277	3222

Reconstruction Details

Average Reprojection Error (normalized / pixels / angular)	0.28 / 1.04 / 0.00032
Average Track Length	3.58 images
Average Track Length (> 2)	5.60 images



Tracks Details



Length	2	3	4	5	6	7	8	9	10
Count	239272	72811	35161	20726	13696	9727	7453	5516	4361

Camera Models Details

v2 dji fc220 4000 3000 brown 0.7222

	k1	k2	k3	p1	p2	focal	aspect_ratio	cx	cy
Initial	0.0000	0.0000	0.0000	0.0000	0.0000	0.7222	1.0000	0.0000	0.0000
Optimized	0.0557	-0.1479	0.1330	0.0007	0.0000	0.7122	1.0000	-0.0023	0.0111

