

ODM Quality Report

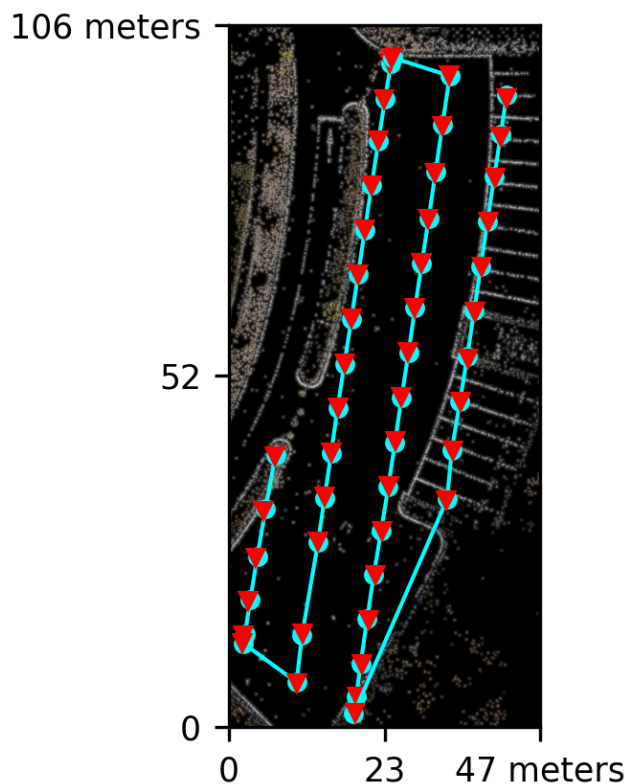
Processed with ODM version 3.3.4

Dataset Summary

Date	11/11/2024 at 00:30:46
Area Covered	0.003898 km ²
Processing Time	15.0m:56.0s
Capture Start	11/11/2024 at 08:01:10
Capture End	11/11/2024 at 08:03:35

Processing Summary

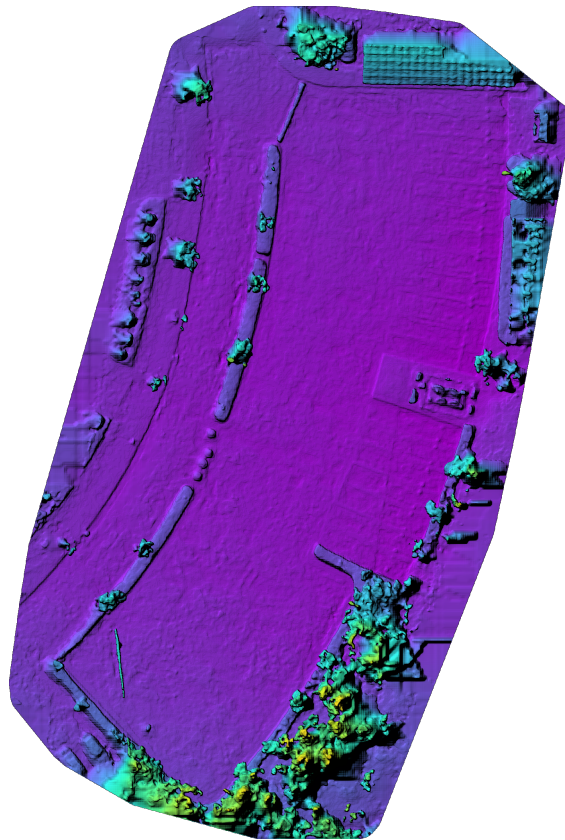
Reconstructed Images	47 over 47 shots (100.0%)
Reconstructed Points (Sparse)	31677 over 32837 points (96.5%)
Reconstructed Points (Dense)	5,742,382 points
Average Ground Sampling Distance (GSD)	1.1 cm
Detected Features	12,577 features
Reconstructed Features	1,801 features
Geographic Reference	GPS
GPS errors	0.23 meters



Previews



Orthophoto

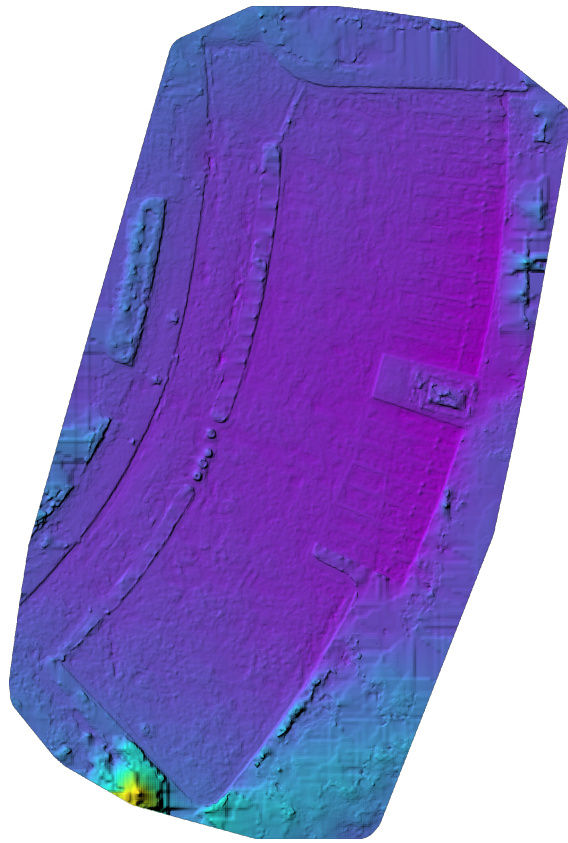


Digital Surface Model



-83.95m

-72.94m



Digital Terrain Model



Survey Data



2 3 4 5+

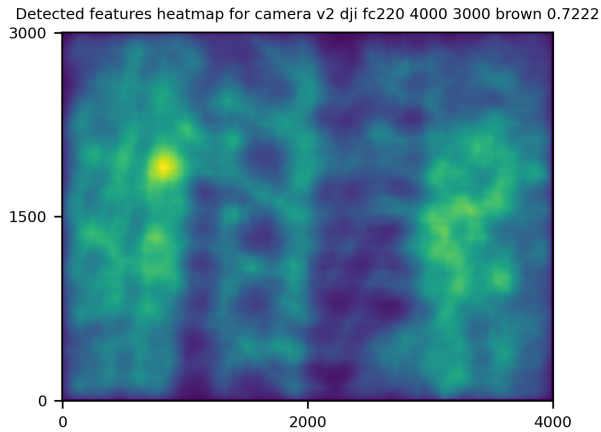
GPS/GCP/3D Errors Details

GPS	Mean	Standard Deviation	RMS Error
X Error (meters)	-0.000	0.126	0.126
Y Error (meters)	0.000	0.154	0.154
Z Error (meters)	0.000	0.152	0.152
Total			0.231

3D	Mean	Standard Deviation	RMS Error
X Error (meters)	0.012	0.018	0.022
Y Error (meters)	0.009	0.016	0.018
Z Error (meters)	0.029	0.057	0.064
Total			0.035

	Absolute	Relative
Horizontal Accuracy CE90 (meters)	0.295	0.037
Vertical Accuracy LE90 (meters)	0.229	0.066

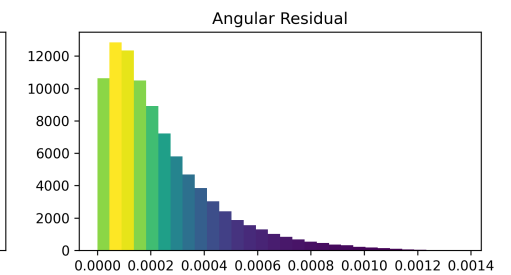
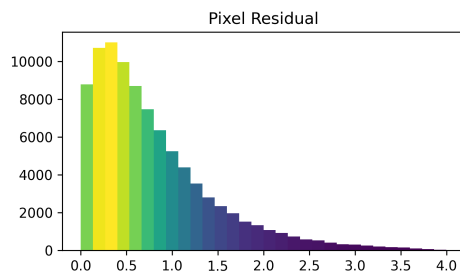
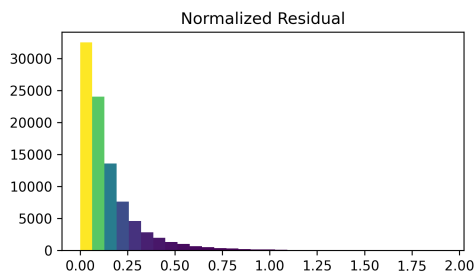
Features Details



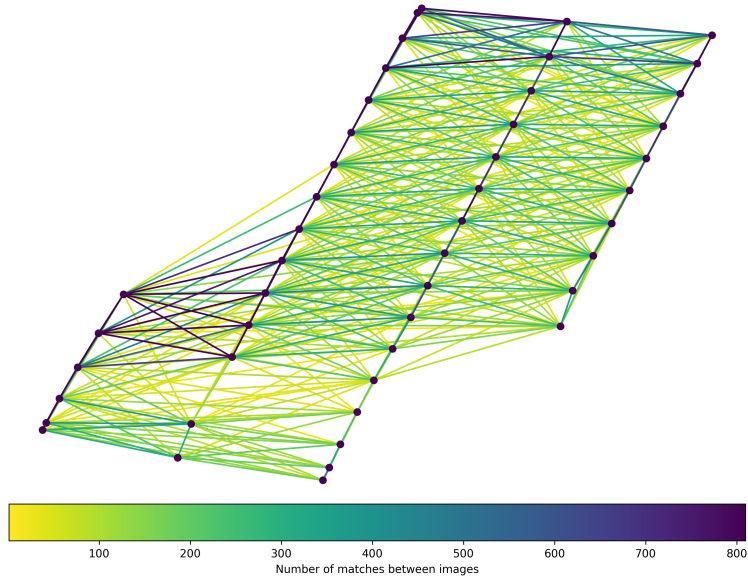
	Min.	Max.	Mean	Median
Detected	10050	15000	12808	12577
Reconstructed	607	3720	1986	1801

Reconstruction Details

Average Reprojection Error (normalized / pixels / angular)	0.15 / 0.79 / 0.00024
Average Track Length	2.95 images
Average Track Length (> 2)	4.30 images



Tracks Details



Length	2	3	4	5	6	7	8	9	10
Count	18604	5960	3024	1714	956	603	335	222	105

Camera Models Details

v2 dji fc220 4000 3000 brown 0.7222

	k1	k2	k3	p1	p2	focal	aspect_ratio	cx	cy
Initial	0.0000	0.0000	0.0000	0.0000	0.0000	0.7222	1.0000	0.0000	0.0000
Optimized	0.0316	-0.0634	0.0417	0.0006	0.0008	0.7097	1.0000	0.0110	0.0047

